



**FACILITIES ADVISORY COMMITTEE
PRESENTATION NOVEMBER 18, 2020**





YOUR TASK CYCLE FOR TONIGHT

Purpose

Determine Cleburne ISD's need for capital projects, timelines, and costs that result in optimum student learning and strategic use of existing and new facilities. The Committee counsels and provides input to the administration and presents findings and recommendations to the Board of Trustees *for consideration of a May 2021 bond referendum.*

Charge

Become informed of current Cleburne ISD needs and goals and design a bond referendum proposal that supports district goals, meets student needs, reflects good stewardship, and can be supported by the Cleburne community.

Outcomes for Tonight

- Aligned Work Group; Cohesive Owners of the 2020-2021 Facilities Advisory Committee Work
- Final Reviews of All Presented Projects, Priorities, and Pricing with Questions and Feedback From Committee
- Financial/Tax Impact Scenarios
- Extended Table and Large Group Discussions
- Bond Construction Instructions/Worksheet
- Next Meeting



- All presented materials & information will be distributed to you as handouts and on the Cleburne ISD website Cleburne ISD Facilities Advisory Committee 2020-21 Bond Tab.
- Because of time constraints, no breaks have been scheduled, so please take plumbing or motion breaks as needed. Restrooms and exits are right out the doors behind you.
- Ask any questions. Unanswered questions or frequently asked questions and answers will be posted on the Cleburne ISD website: Cleburne ISD Facilities Advisory Committee tab. (<https://www.c-isd.com/fac>)
- A committee roster will be distributed. If your information is incorrect, write the correct information on a post-it and leave it on your table. Your attendance at every meeting will help yield optimum results for this committee and this community.
- Those who miss three consecutive meetings will not receive further meeting notifications (unless absences pre-communicated with District liaison)
- Catch-up work and gathering information from missed meetings is the responsibility of the committee member. Because of the amount and complex and sequential nature of the presentations, no committee time will be allotted to remediating individuals at tables.



- One conversation at a time; no side-bar talk; no visiting table to table
- Honor the time contract
- Stay on topic and on task
- Share ideas freely; no “duck shooting”
- Listen to understand; respect and honor others’ input
- Think holistically; sublimate personal agendas; consider the whole District.
- Be kind
- Be honest
- Silence electronic devices
- Share the conversation—at tables and in large group; don’t monopolize time, conversation or “report out” opportunities
- Be relentless in pursuing consensus
- HAVE FUN!





PROPERTY TAX VALUES & TAX RATES

Dr. Kyle Heath
Superintendent



ASSESSED PROPERTY VALUES

2020



\$100,000
Assessed Value



10%
Valuation Increase



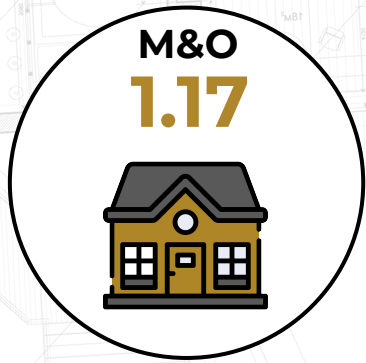
2021



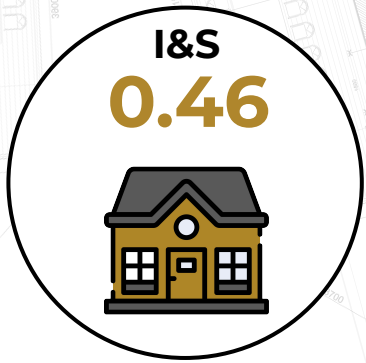
\$110,000
Assessed Value

PROPOSED BOND TAX RATES

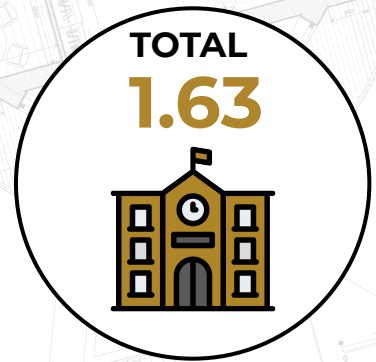
2016



+



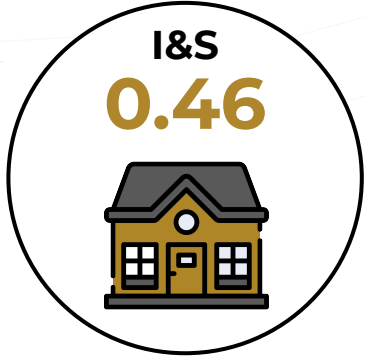
=



2020
Proposed



+



=



The background of the slide is a detailed architectural floor plan of a building. It features various rooms, corridors, and structural elements. Several rooms are labeled with their areas in square meters: 34m², 18m², 10m², 8m², 4m², 24m², 18m², and 10m². The plan includes a grid system with letters A through E and numbers 1 through 5. Dimensions are provided for various sections, such as 4100, 4400, 4900, 5600, 3700, 5400, 2800, 3100, 3400, 3500, 3800, 4000, 4200, 4500, 4800, 5100, 5400, 5700, 6000, 6300, 6600, 6900, 7200, 7500, 7800, 8100, 8400, 8700, 9000, 9300, 9600, 9900, 10200, 10500, 10800, 11100, 11400, 11700, 12000, 12300, 12600, 12900, 13200, 13500, 13800, 14100, 14400, 14700, 15000, 15300, 15600, 15900, 16200, 16500, 16800, 17100, 17400, 17700, 18000, 18300, 18600, 18900, 19200, 19500, 19800, 20100, 20400, 20700, 21000, 21300, 21600, 21900, 22200, 22500, 22800, 23100, 23400, 23700, 24000, 24300, 24600, 24900, 25200, 25500, 25800, 26100, 26400, 26700, 27000, 27300, 27600, 27900, 28200, 28500, 28800, 29100, 29400, 29700, 30000. The text is overlaid on the plan, centered horizontally.

PROCESS INFORMATION

Michelle Hughes
Facilitator



The background of the slide is a detailed architectural floor plan of a building. It shows various rooms, corridors, and structural elements. Some rooms are labeled with numbers like 101, 102, 103, 104, 105, 106, 107, 108, 109, 110, 111, 112, 113, 114, 115, 116, 117, 118, 119, 120, 121, 122, 123, 124, 125, 126, 127, 128, 129, 130, 131, 132, 133, 134, 135, 136, 137, 138, 139, 140, 141, 142, 143, 144, 145, 146, 147, 148, 149, 150, 151, 152, 153, 154, 155, 156, 157, 158, 159, 160, 161, 162, 163, 164, 165, 166, 167, 168, 169, 170, 171, 172, 173, 174, 175, 176, 177, 178, 179, 180, 181, 182, 183, 184, 185, 186, 187, 188, 189, 190, 191, 192, 193, 194, 195, 196, 197, 198, 199, 200. There are also labels for areas like '10m', '18m', '8m', '4m', '24m', '10m', '18m', '10m'. The plan includes a grid system with letters A through E and numbers 0080 through 0180. The text is overlaid on this plan.

REVIEW: FACILITIES OPTIONS FOR WHEAT & SMITH

Rick Blan

Partner, PBK Architects

Todd Spore

Partner, PBK Architects

Lee Osborne

Principal, PBK Architects





FACILITIES OPTIONS



OPTION A

ESTIMATED PROJECT COST: \$47M - \$50M

WHEAT MIDDLE SCHOOL

FACILITIES OPTIONS



OPTION B

ESTIMATED PROJECT COST: \$68M - \$70M

WHEAT MIDDLE SCHOOL

FACILITIES OPTIONS



SMITH INTERMEDIATE SCHOOL

The background of the slide is a detailed architectural floor plan of a building. It shows various rooms, corridors, and structural elements. Room numbers such as 10M, 18M, 8M, 4M, 24M, and 10M are visible. Grid lines labeled A through E and 1 through 5 are overlaid on the plan. The text is centered over the plan.

REVIEW: TECHNOLOGY, SECURITY, & SAFETY NEEDS

Jonathan Easley

Technology Operations Coordinator



Safety/Security - Technology Projects	Project Totals	Priority
Safety & Security - Classroom Instructional Tech	\$3,900,000.00	1
Campus/Teacher Laptops	\$1,390,000.00	1
Core Tech Services (Internet)	\$1,310,000.00	2
Career and Technical Education Labs	\$800,000.00	3
Total	\$7,400,000.00	





**FACILITIES TOUR OF:
PAC & SAC**





OPTIONS FOR PAC, SAC, & STADIUM

Rick Blan

Partner, PBK Architects

Todd Spore

Partner, PBK Architects

Lee Osborne

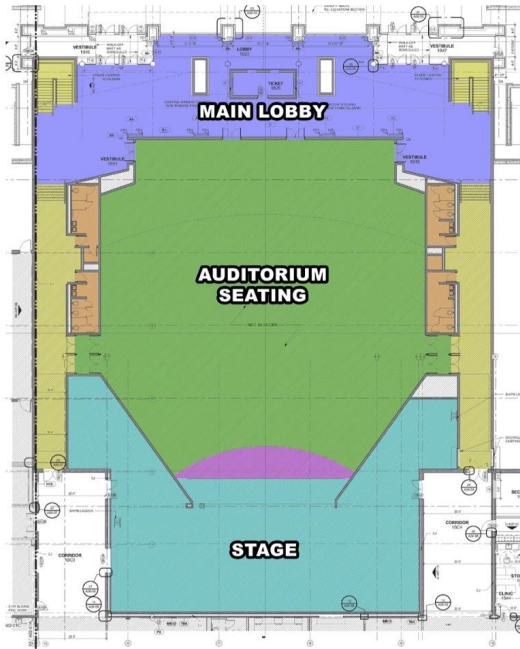
Principal, PBK Architects



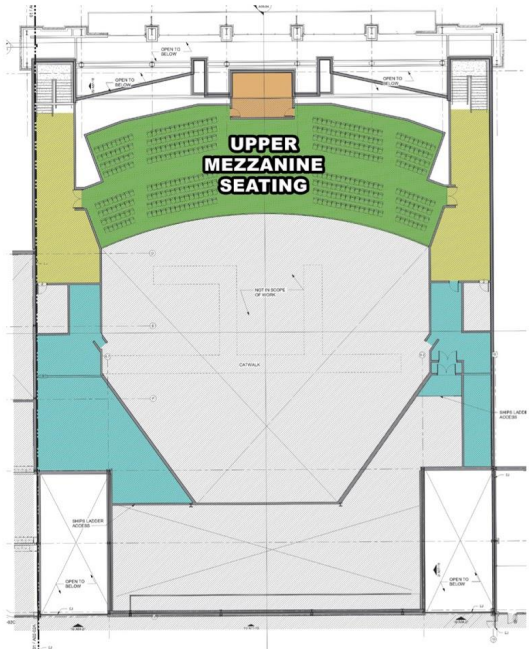
OPTIONS FOR PAC

- **PERFORMING ARTS SOUND AND LIGHTING**
SOUND AND THEATRICAL LIGHTING ONLY,
HOUSE LIGHTING TO REMAIN
- **PERFORMING ARTS HOUSE FINISHES**
PAINT AND CARPET AT HOUSE AREA
- **NEW RESTROOMS AT LOBBY**
NO RESTROOM WORK AT OPTION A
- **NEW HVAC**
NEW DUCT SYSTEM AND NEW DESIGN TO MEET
CURRENT VENTILATION RATES
- **NEW ROOF**
INCLUDES DECK REPAIR ALLOWANCE
- **NO ADDITION OF ELEVATOR ACCESS TO
SECOND LEVEL SEATING**
- **DESIGN AND ESTIMATING CONTINGENCY**

FIRST FLOOR



SECOND FLOOR



OPTION A

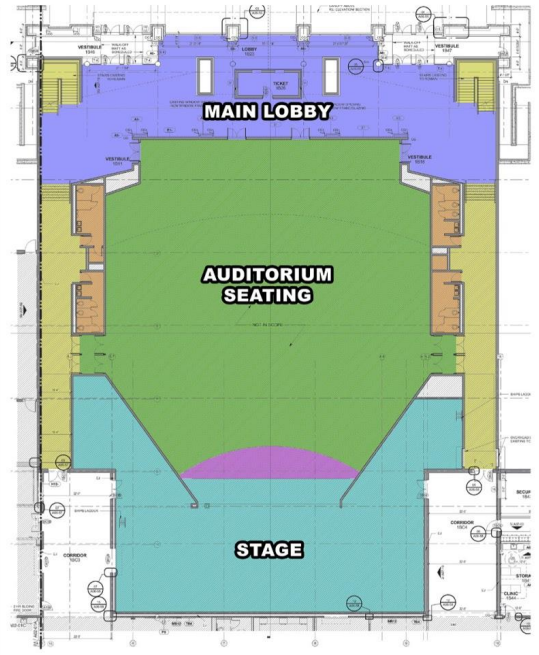
ESTIMATED PROJECT COST: \$4,741,926

HIGH SCHOOL PERFORMING ARTS CENTER

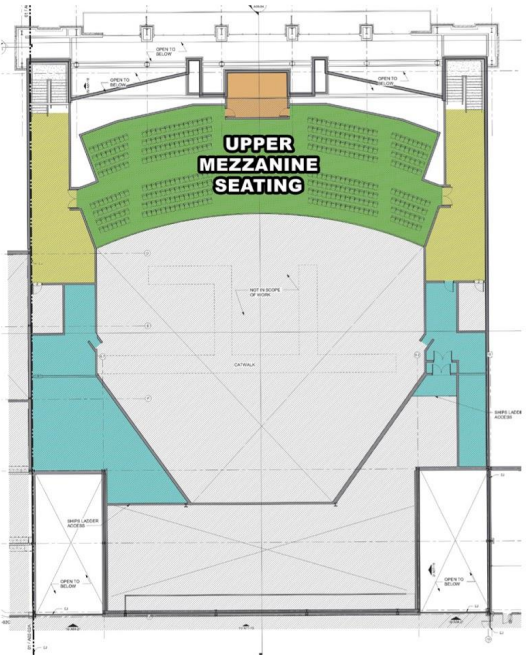
OPTIONS FOR PAC

- **PERFORMING ARTS CENTER RENOVATION**
INCLUDES STAGE FINISHES, LIGHTING, SOUND, HOUSE FINISHES, AND SUPPORT SPACES, EXISTING SEATING TO REMAIN. (SEATING ESTIMATED AT 1000/700)
- **NEW RESTROOMS AT LOBBY**
- **NEW HVAC**
NEW DUCT SYSTEM AND NEW DESIGN TO MEET CURRENT VENTILATION RATES
- **NEW ROOF**
INCLUDES DECK/REPAIR ALLOWANCE
- **FILL IN PIT AND EXPAND THRUST STAGE**
- **ADDITION OF ELEVATOR ACCESS TO SECOND LEVEL SEATING**
- **DESIGN AND ESTIMATING CONTINGENCY**

FIRST FLOOR



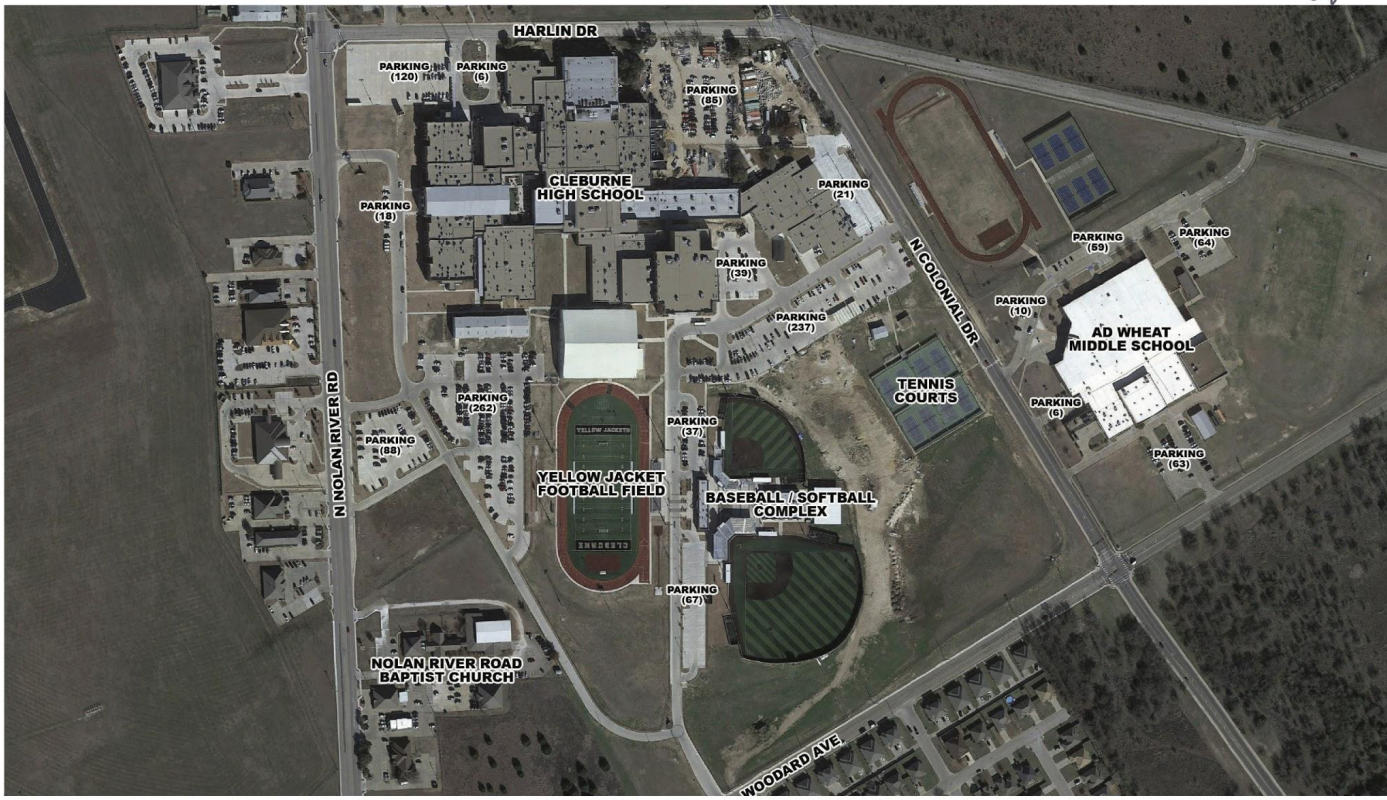
SECOND FLOOR



OPTION B

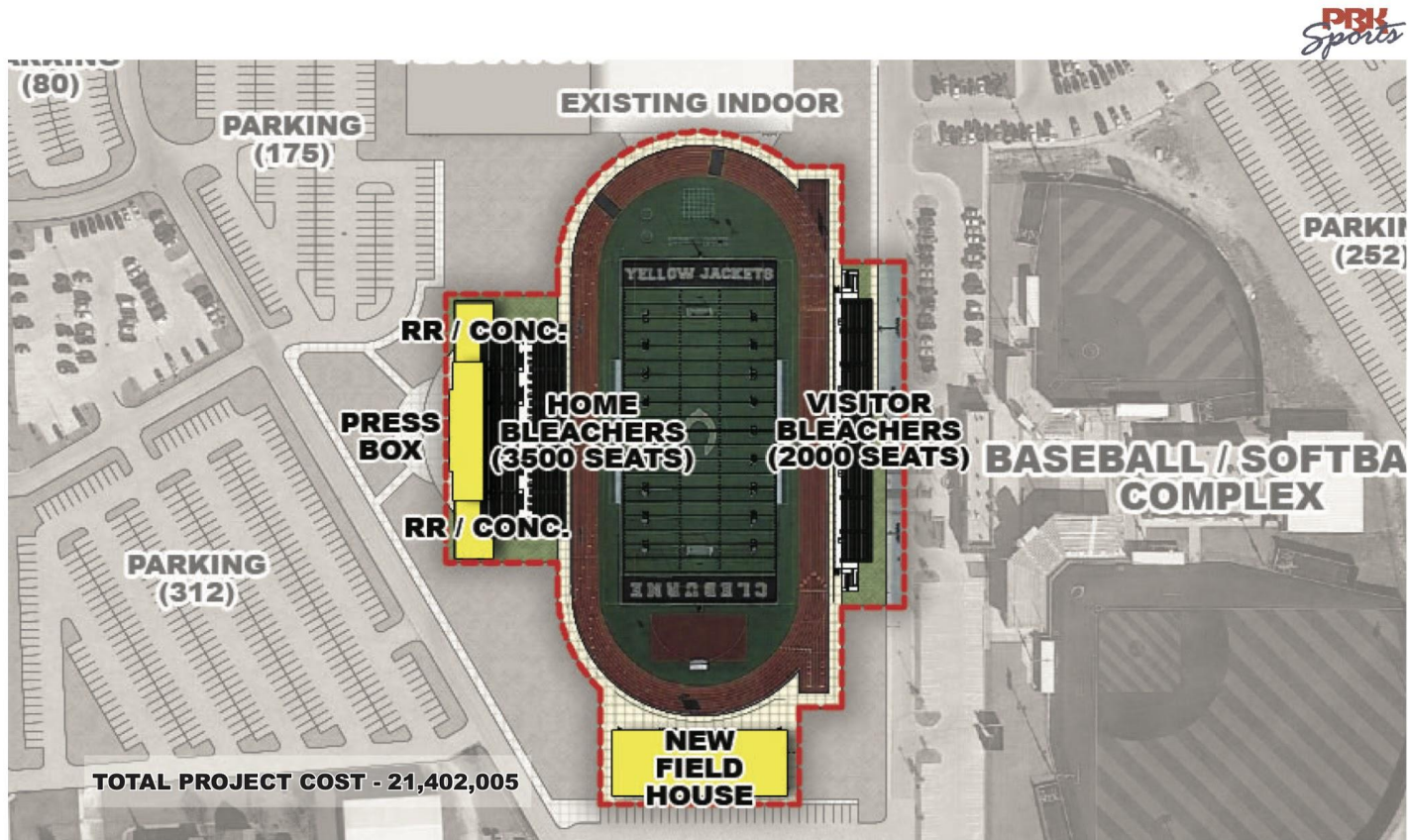
ESTIMATED PROJECT COST: \$9,769,888

HIGH SCHOOL PERFORMING ARTS CENTER



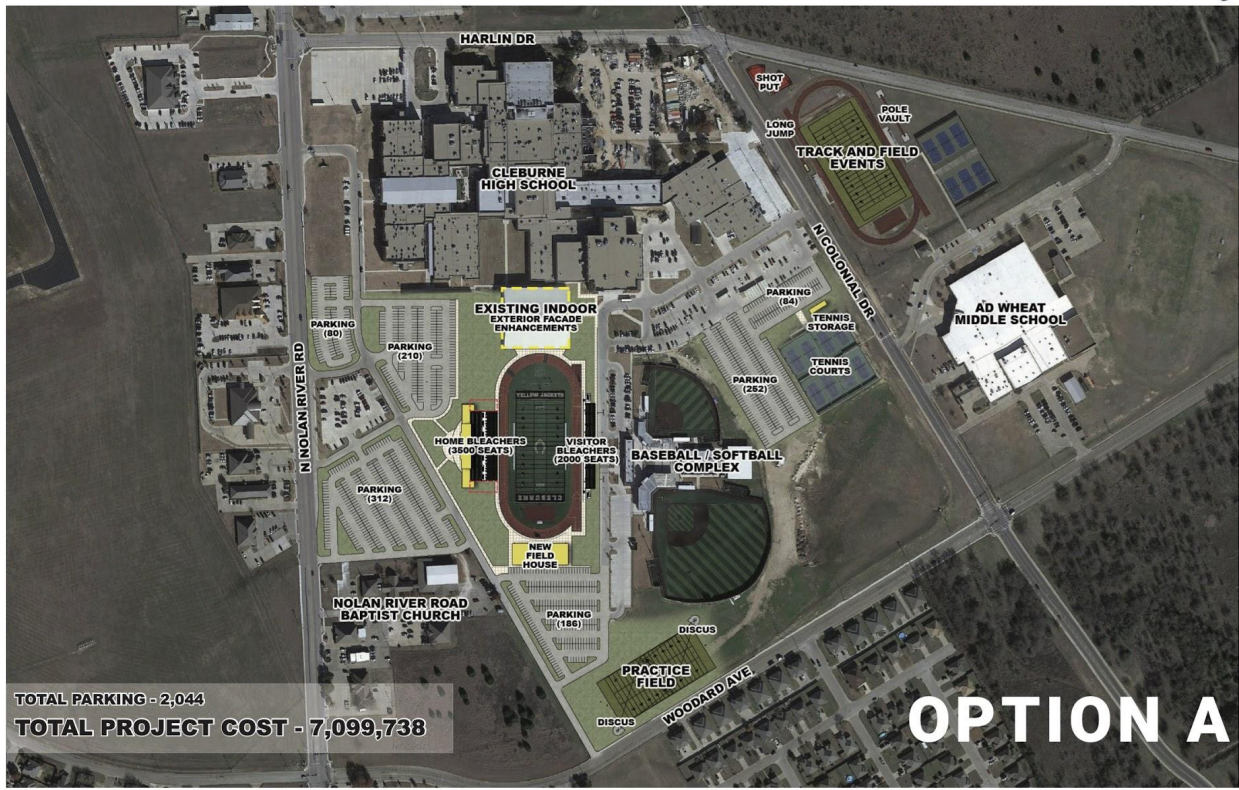
CLEBURNE HIGH SCHOOL EXISTING AERIAL

OPTIONS FOR STADIUM



STADIUM CONCEPTUAL SITE PLAN

OPTIONS FOR STADIUM & SAC



CONCEPTUAL SITE PLAN

OPTIONS FOR STADIUM & SAC



TOTAL PARKING - 2,009
TOTAL PROJECT COST - 15,501,211

OPTION B

CONCEPTUAL SITE PLAN

OPTIONS FOR STADIUM & SAC



OPTION C

CONCEPTUAL SITE PLAN



**Questions, Comments, & Feedback
About Stadium, PAC, & SAC Options**



The background is a detailed architectural floor plan of a building. It features various rooms, corridors, and structural elements. Several rooms are labeled with their areas: 34m², 18m², 10m², 8m², 4m², 24m², 18m², and 10m². The plan includes a grid system with letters A through E and numbers 1 through 5. Dimensions and other technical specifications are scattered throughout the drawing.

LIKES & WISHES



NEXT MEETING



December 02, 2020



5:30 – 6:00: Meal Provided



6:00 – 8:30: Meeting Content



Cleburne High School Cafeteria

